

DRAWN FROM SCIENCE

January 26 - March 9, 2024

1. Barbara Regina Dietzsch (Nuremberg, 1706-1783)  
*Still life with game and exotic birds*, 18th century  
gouache and gold leaf on vellum  
7 1/8 x 9 1/2 inches  
9 3/4 x 12 inches framed



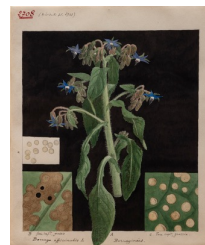
2. Barbara Regina Dietzsch (Nuremberg, 1706-1783)  
*Still life with artichokes*, 18th century  
gouache and gold leaf on vellum  
7 1/8 x 9 1/2 inches  
9 3/4 x 12 inches framed



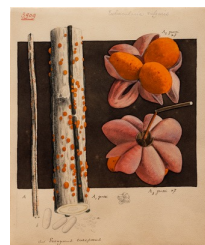
3. Commandant Julien Lignier (1872-1932)  
*Cucumber (Cucumis)*, c. 1925  
watercolor, ink on paper  
11 7/8 x 9 3/4 inches  
19 1/2 x 17 3/8 inches framed



4. Commandant Julien Lignier (1872-1932)  
*Borage (Borago officinalis L.)*, c. 1925  
watercolor, ink on paper  
11 3/4 x 9 3/4 inches  
19 1/2 x 17 3/8 inches framed



5. Commandant Julien Lignier (1872-1932)  
*European Spindle-Tree (Euonymus europæus)*, c. 1925  
watercolor, ink on paper  
11 5/8 x 9 7/8 inches  
19 1/2 x 17 3/8 inches framed



6. Commandant Julien Lignier (1872-1932)  
*Bean (Haricot)*, c. 1925  
watercolor, ink on paper  
11 3/4 x 10 inches  
19 1/2 x 17 3/8 inches framed



7. Commandant Julien Lignier (1872-1932)  
*Mullein (Verbascum)*, c. 1925  
 watercolor, ink on paper  
 11 5/8 x 9 5/8 inches  
 19 1/2 x 17 3/8 inches framed



8. Barbara Regina Dietzsch (Nuremberg, 1706-1783)  
*Peony*, c. 1760  
 gouache, watercolor and gold border on vellum  
 11 1/2 x 8 1/4"  
 22 1/2 x 19 1/4" framed



9. Barbara Regina Dietzsch (Nuremberg, 1706-1783)  
*A Study of a Thistle*, c. 1760  
 gouache, watercolor and gold border on vellum  
 11 1/2 x 8 1/4"  
 17 x 14 1/4" framed



10. Barbara Regina Dietzsch (Nuremberg, 1706-1783)  
*Narcissus Study*, c. 1760  
 gouache, watercolor and gold border on vellum  
 11 1/2 x 8 1/4"  
 16 5/8 x 13 1/2" framed



11. Barbara Regina Dietzsch (Nuremberg, 1706-1783)  
*Thistle with Butterflies and a Caterpillar*, c. 1760  
 gouache, watercolor and gold border on vellum  
 11 1/2 x 8 1/4"  
 13 3/4 x 10 3/4" framed



12. Booth Grey (1740-1802)  
*Tropaeolum majus - Nasturtium*, c. 1790s  
 watercolor collage on antique laid paper prepared with ink  
 12 x 8 1/2 inches  
 23 3/4 x 19 3/4 inches framed



13. Booth Grey (1740-1802)  
*Hemerocallis Fulva - St. Bruno Lilly*, c. 1790s  
 watercolor collage on antique laid paper prepared with ink  
 12 3/8 x 9 1/4 inches  
 23 3/4 x 19 3/4 inches framed



14. Barbara Regina Dietzsch (Nuremberg, 1706-1783)  
*Géranium*, 18th century  
gouache, watercolor and gold border on vellum  
11 1/2 x 8 1/4 inches  
12 5/8 x 9 1/2 inches framed



15. Barbara Regina Dietzsch (Nuremberg, 1706-1783)  
*Red Carnation*, 18th century  
gouache, watercolor and gold border on vellum  
11 1/2 x 8 1/4 inches  
12 5/8 x 9 1/2 inches framed



16. Barbara Regina Dietzsch (Nuremberg, 1706-1783)  
*A Delphinium with a resting butterfly*, 18th century  
gouache, watercolor on vellum  
14 x 10 3/4 inches  
15 13/16 x 12 5/16 inches framed

